

Adaptability to Enhanced Security



AD@PTEC Plus

AdapTec Plus combines power supply and door access controller features in a compact casing for an encrypted and secure I/O function, enhancing door access control functionalities and easing installation processes. The AdapTec Plus is an exceptional FingerTec accessory in a small package!



Enhanced Security with Encrypted Signals

It supports FingerTec encrypted 26-bit Wiegand communication output; providing enhanced security level for extra protection.



Power Up Terminals & Door Lock Systems

A single AdapTec Plus can provide power simultaneously to a maximum 2 units of FingerTec terminals and 2 sets of door lock accessories such as the EM Lock and drop bolt in one single system installation.



Prolonged Life Span of Hardware

With data encryption, the life span of the terminals can be prolonged without the risk of short circuiting when using AdapTec Plus.



Control IN/OUT Terminals At An Entrance

AdapTec Plus is a perfect choice for an IN/OUT installation, where a door is controlled both, at the entrance and the exit.



Supports Rechargeable Backup Battery

Connects well to any 12V rechargeable backup battery, providing power to ensure protection of access during any events of power failure.



Alert Emergency with Siren

Compatible with an NC siren type with a maximum of 0.5A load for emergency event e.g if the terminal is being illegally dismantled.



Seamless Integration with FingerTec Terminals

Mix and match the FingerTec terminals via AdapTec Plus for a cost effective access control system suitable for small and medium sized offices.



DIY Metal Casing for Cleaner Installation


Store an AdapTec Plus and a backup battery in an exclusive FingerTec DIY metal casing, providing a cleaner installation.



WEB LINK

 **Installation Guide**
<http://info.fingertec.com/adapteplus-1>

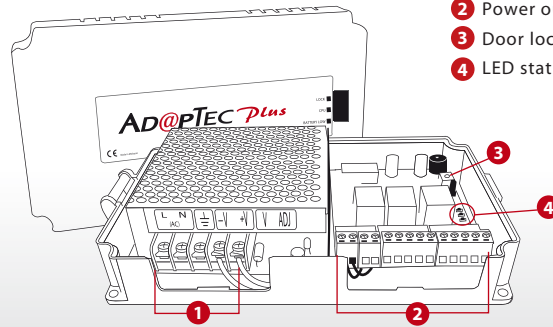
 **Video Guide**
<http://info.fingertec.com/adapteplus-2>

 **Technical Tips**
<http://info.fingertec.com/adapteplus-3>

LAYOUT PLAN

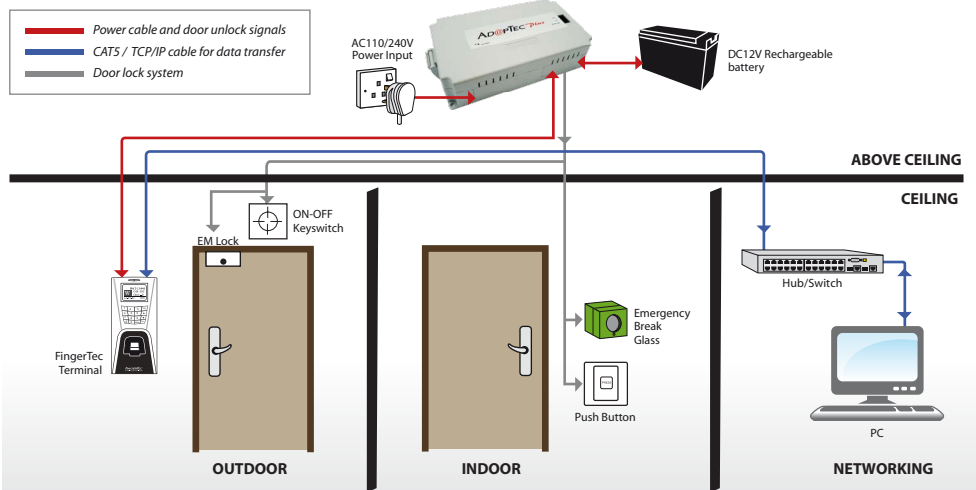
System Communication

- 1 Power supply/power input module
- 2 Power output/access control module
- 3 Door lock timer
- 4 LED status indicator



Installation Diagram

for illustration only



SPECIFICATIONS

PHYSICAL APPEARANCE

Surface finishing	Acrylonitrile Butadiene Styrene (ABS)
Dimension, mm	212 x 49 x 114
Weight, kg	0.6
CPU	High Performance RISC CPU

POWER SUPPLY

Power input	AC 110 ~ 240 V (Universal Input)
Power output	12 VDC 3A
Backup Power system	UPS or 12 VDC Rechargeable battery

INPUT – OUTPUT SIGNAL

Input signal	26-bit FingerTec encrypted Weigand signal
Output signal	12 VDC 0.5A Siren 12 VDC 3A EM output (NO/NC Type door locks)

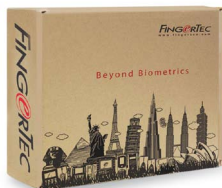
ALERTS & NOTIFICATIONS

Over input voltage	Yes, 3 long beeps
Door release	Yes, 2 short beeps
Door force open	Yes, continuous beeps (May opt to output external siren system)
Illegal dismantle FingerTec terminals	Yes, continuous beeps (May opt to output external siren system)
Door unlock timer	VR type, LED blinks to indicate unlock time in Seconds.
On Board LED indicators	EM LED lit up – door lock output is working Status LED lit up – CPU is working. Battery low LED lit up – Battery is low and cut-off

ON BOARD PROTECTION

Over voltage alarm	> 15 VDC
Fuses	PTC type
Battery cut-off	8.5 ~ 9.5 VDC

NOTE: Specifications are subject to change. Check <http://product.fingertec.com> for latest product information.



Packaging

Dimension (mm) : 225 (L) x 72 (W) x 168 (H)
 Weight : 0.78 kg



timeTec

www.timeteccloud.com
 TimeTec © 2021, All Rights Reserved

Authorized Reseller: