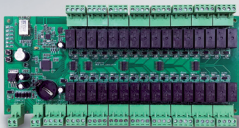


Elevate Lift Technology through Smartphone Access



TimeTec Lift Control Panel BLE-16

TimeTec BLE-16 is a lift control panel that enables smartphone for elevator access in high-rise residential or office towers by tapping on the Bluetooth communication technology. It serves four different cloud solutions for TimeTec in lift control, namely TimeTec Access for Office Environment, TimeTec VMS for Office Visitor Management, TimeTec iNeighbour for Residential Smart Community and i-TimeTec for Small High-Rise Building Deployment. A single BLE-16 controller can support up to 16 floors with one dedicated relay contact for each floor, and for skyscrapers having more than 16 floors, the controller can be extended by stacking the device up in relation to the number of floors required, i.e. 32 floors will require 2 BLE-16, 48 floors will require 3 BLE-16 and so on.

TimeTec BLE-16 makes elevator experience secure, convenient and centralized. All you need to do is to turn on the App and tap on the pseudo-button within the App to access your floor.



Access to Specific Floors

Admin can preset authorized floors for every user through a cloud solution



Time Zone Settings

On top of restricting floor levels, admin can set time zone for restricted access



Smart Phone as Credential

Do away with card system; use your own smartphone as access credential



Visitor Access Management

Provide one time or multiple accesses to authorized visitors to specific floors only



Tenant Access Management

Admin can set tenant access rights accurately and fuss-free



Access to Different Floors

Depending on the management/building rules, tenants and owners could be allowed access to various floors in the same building or neighbourhood



Statistic Report

Building manager can monitor and generate Access Activity Report daily, monthly and even on a yearly basis



TimeTec Cloud & its Apps

Seamless integration with TimeTec various useful solutions for better security and convenience



SYSTEM DEPLOYMENT



TimeTec Access
www.timetecaccess.com



TimeTec VMS
www.timetecvms.com

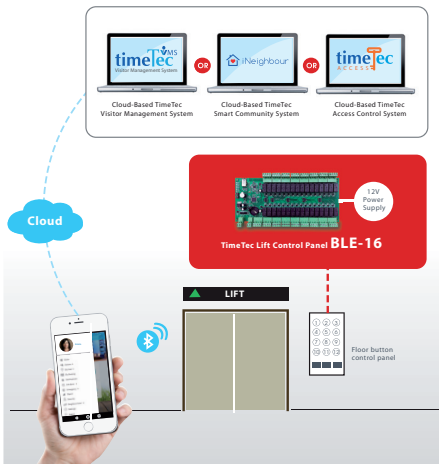


TimeTec iNeighbour
www.ineighbour.com



i-TimeTec
www.i-timetec.com

SYSTEM DIAGRAM



SPECIFICATIONS

MODEL	TimeTec BLE-16
CHANNELS	16 FORM C Relay output, Fail-Safe bypass design
FLOORS	16 (extend by expansion board)
DIMENSION (MM)	180 (L) x 231 (W) x 62 (H)
WEIGHING (KG)	1.7
POWER INPUT	9 – 12 VDC
WORKING TEMPERATURE (°C)	20 - 80
HUMIDITY (%)	10 - 90
COMMUNICATION	Dual BLE 4.0 & 4.2
BLUETOOTH ENCRYPTION	64-bit TimeTec Proprietary
LED INDICATOR	Yes
TRANSACTION RECORDS	Unlimited, stored in cloud server, local 1000 transactions
EVENT CAPACITY	Unlimited
MOBILE APP	Android 4.0.2 and above, iOS 8.0 and above
APP & CLOUD	i-TimeTec, TimeTec Access, TimeTec VMS, iNeighbour
LANGUAGE (APP & CLOUD)	Arabic, Chinese Simplified, Chinese Traditional, English, Hindi, Indonesian, Malay, Nepali, Spanish, Thai, Turkish, Vietnamese. Other languages are available upon request.

NOTE: Specifications are subject to change without prior notice.

Authorized Reseller:



timeTec
www.timeteccloud.com
TimeTec © 2021, All Rights Reserved